

**Whiskey Five Whiskey**

**RRVARC**

**2023 Summer Field Day**



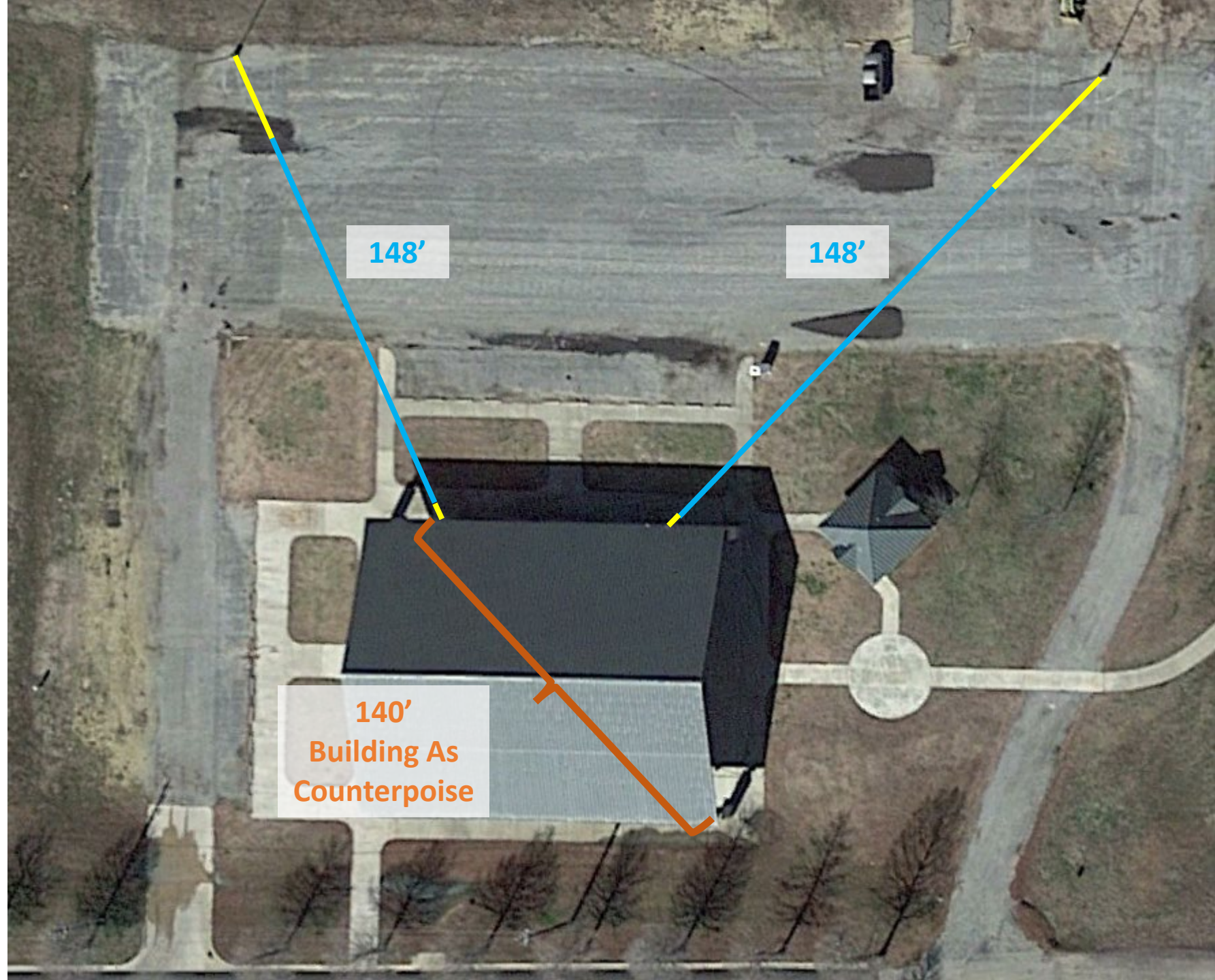
## W5W 2023 Summer Field Day

### Two New Field Day Dipole Antennas

- Quick and easy to raise using halyards on the pavilion frame and the parking lot light poles.
- Two non-resonant HF dipole wire antennas, shown in aqua, each 148' long, the other side of the dipoles are the metal pavilion (ground), which is ~140' across.
- Each antenna to be strung between the pavilion I-Beams at 15' and the two existing parking lot lights at 30'.
- Vehicles in the parking lot should be able to drive under the antennas without problems.
- A wide-range tuner will be needed to use with each antenna. Open-air twinlead will drop down from the antennas at the pavilion.
- These antennas should work from 160 meters through 6 meters.

### Questions:

- **Will the two antennas couple to each other through the pavilion and cause cross-band interference?**



## W5W 2023 Summer Field Day

### WA5VHU will bring the following:

- The two parking lot wire antennas and ladder line to drop from the antenna to the ground.
- One tuner for his use on the west parking lot antenna.
- **You need to bring your own tuner to use the east parking lot antenna.**
- One HF/6 meter radio.
- The HF band filters and flags. These will be used by each HF station.
- The Field Day software, **you need your own Windows computer for your logging.**
- The Field Day software will be networked among the computers via Wi-Fi.
- Cindy and I will be operating from our air conditioned canopy and will sleep in the canopy overnight.
  
- You need to bring your own tuner for the east parking lot antenna. The internal tuner in your radio will not work for this antenna.
  
- W5EBC will be there with his motor home with generator and air conditioning.



## W5W 2023 Summer Field Day

- If you are going to bring your radio and antenna to operate don't forget:
  - Radio.
  - Power supply & AC extension cord.
  - Microphone/key/computer.
  - Headphones/headset.
  - Coax.
  - Antenna tuner (if needed for your antenna).
  - Antenna tuner, wide range for the East parking lot dipole, internal tuner will not work.
  - Antenna & supports.
  - Table & chair.
  - Fan, drinks, cup, snacks.
  - If you need help or equipment let me or someone else know!
- If you want to operate but don't want to bring your own equipment just ask at any station. Most operators would love some relief! If you aren't sure if you want to operate you can log the contacts on the computer and observe what the operation is all about.

# W5W 2023 Summer Field Day

## Bring your own talkie and operate Field Day!

You can make Field Day contacts on 2m and 70cm FM with your portable. There will be quite a number of stations on the air on the common simplex frequencies on Field Day.

Remember – contacts through repeaters are not allowed, simplex only!

- We will supply:
  - Omni vertical 2m/70cm base station gain antenna 40' up in the air.
  - 45 watt 2m/35 watt 70cm FM amplifier.
  - Coax cable, jumpers & antenna connector adapters.
  - Logging computer.

Be sure to fully charge your battery!



## W5W 2023 Summer Field Day


### Stations So Far:

- WA5VHU / KD5CCB, one HF/6m station, using the west parking lot wire antenna.
- 2m/70cm talkie guest station equipment.
- Who/what else?
- The free extra VHF/UHF all mode station? Anyone?

### Food / Drinks / Ice ???

- Anyone planning for food? Any burgers left from the fair? Fend for yourselves?



-  on Lamar is open 24/7.
- WA5VHU / KD5CCB will have some ice and some drinks.